



**W**  
WHITES

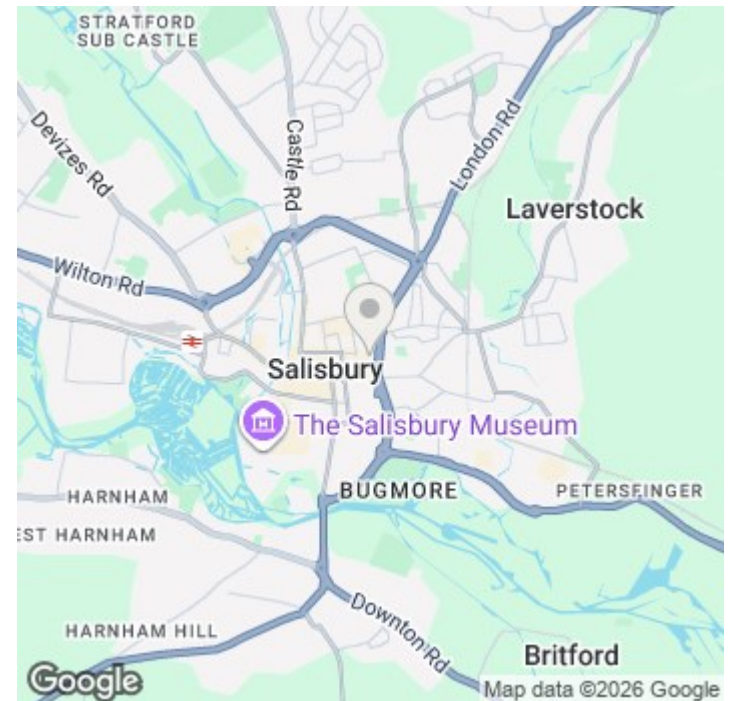
47 Winchester Street, Salisbury, Wilts, SP1 1HG

£1,100 PCM

## About The Property

Set within a Grade II listed building in the heart of Salisbury, this well-presented two-bedroom ground floor flat offers well-proportioned accommodation, just a short walk from Salisbury Guildhall Square. Recently redecorated and fitted with new carpets, the property retains its period features while offering a clean and updated interior.

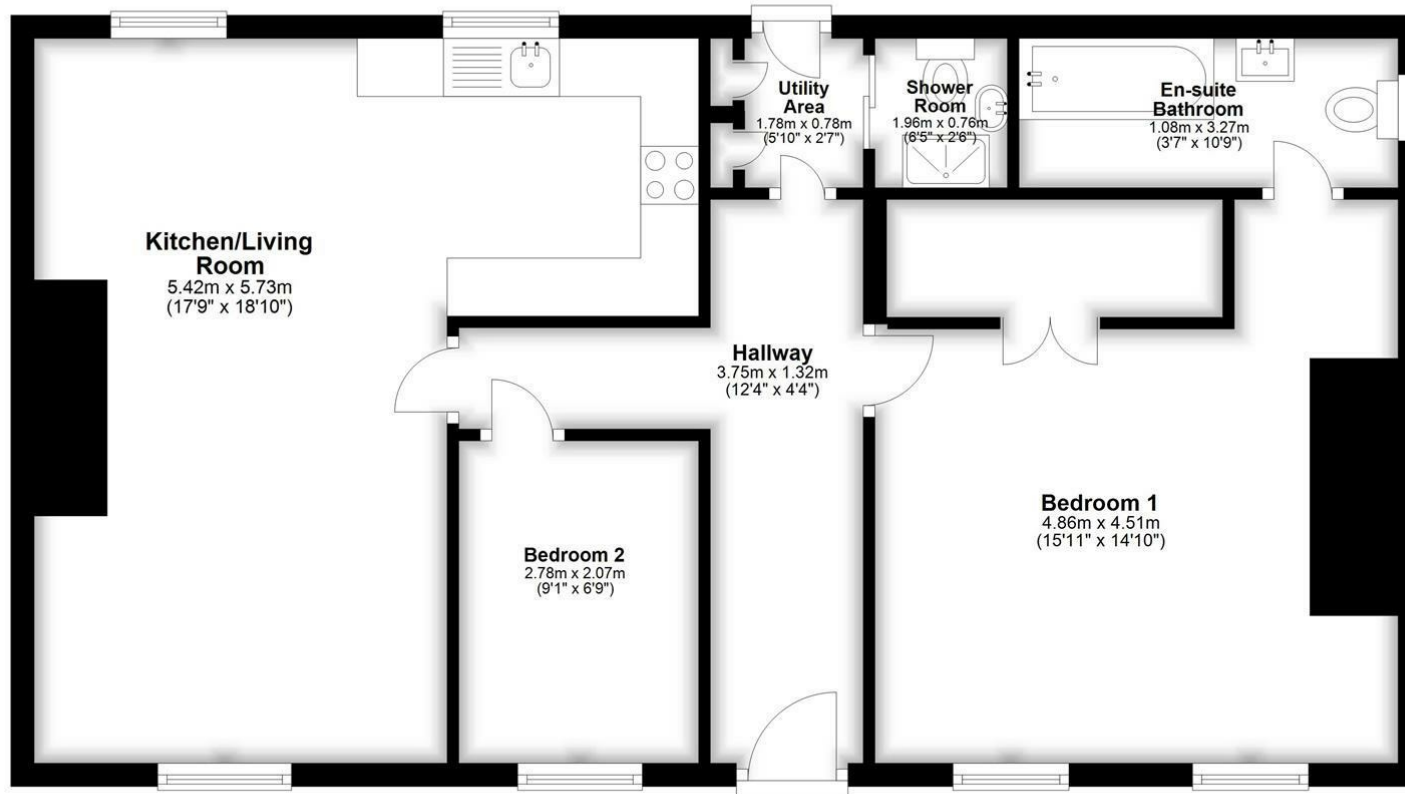
- Two double bedrooms
- Master with en-suite
- Open plan living/kitchen
- Feature fireplace
- Private patio area
- Allocated parking space
- Central Salisbury location
- EPC D
- Integrated fridge/freezer
- Ample internal storage





## Ground Floor

Approx. 69.0 sq. metres (742.3 sq. feet)



Total area: approx. 69.0 sq. metres (742.3 sq. feet)

## Further Information

Let available date: 8th June 2026  
 NB: This date is provisional and will only be confirmed once referencing has been successfully completed.

Property type: Flat

Furnish type: Unfurnished

Deposit: £1,265

Local authority: Wiltshire Council

Council Tax: Band B

EPC: (null)

### Energy Efficiency Rating

|   | Current                    | Potential |
|---|----------------------------|-----------|
| Very energy efficient - lower running costs |                            |           |
| (92 plus) <b>A</b>                          |                            |           |
| (81-91) <b>B</b>                            |                            |           |
| (69-80) <b>C</b>                            |                            |           |
| (55-68) <b>D</b>                            |                            |           |
| (39-54) <b>E</b>                            |                            |           |
| (21-38) <b>F</b>                            |                            |           |
| (1-20) <b>G</b>                             |                            |           |
| Not energy efficient - higher running costs |                            |           |
| <b>England &amp; Wales</b>                  | EU Directive<br>2002/91/EC |           |